



Annex 1 Project Maps

SS 110/10kV Valandovo

Reconstruction of existing double phase 2x110 kV SS Valandovo – SS 110/25 kV Miletkovo in three-phase 110 kV OHL

Section of existing line to be dismantled and removed

SS 110/25kV EVP Miletkovo

New two phase 2x110 kV OHL SS 110/25 kV EVP Miletkovo

New 110kV OHL - Extension to SS 400/110 kV Miletkovo

'Gradishor-Mramor' archeological site

Existing OHL 400kV SS Dubrovo - MKGR border

New SS 400/110kV Miletkovo

400kV in-out connection





SS 110/10kV
Strumica 2

SS STR 2 Gantry TJS

V-S2 St48 TPS

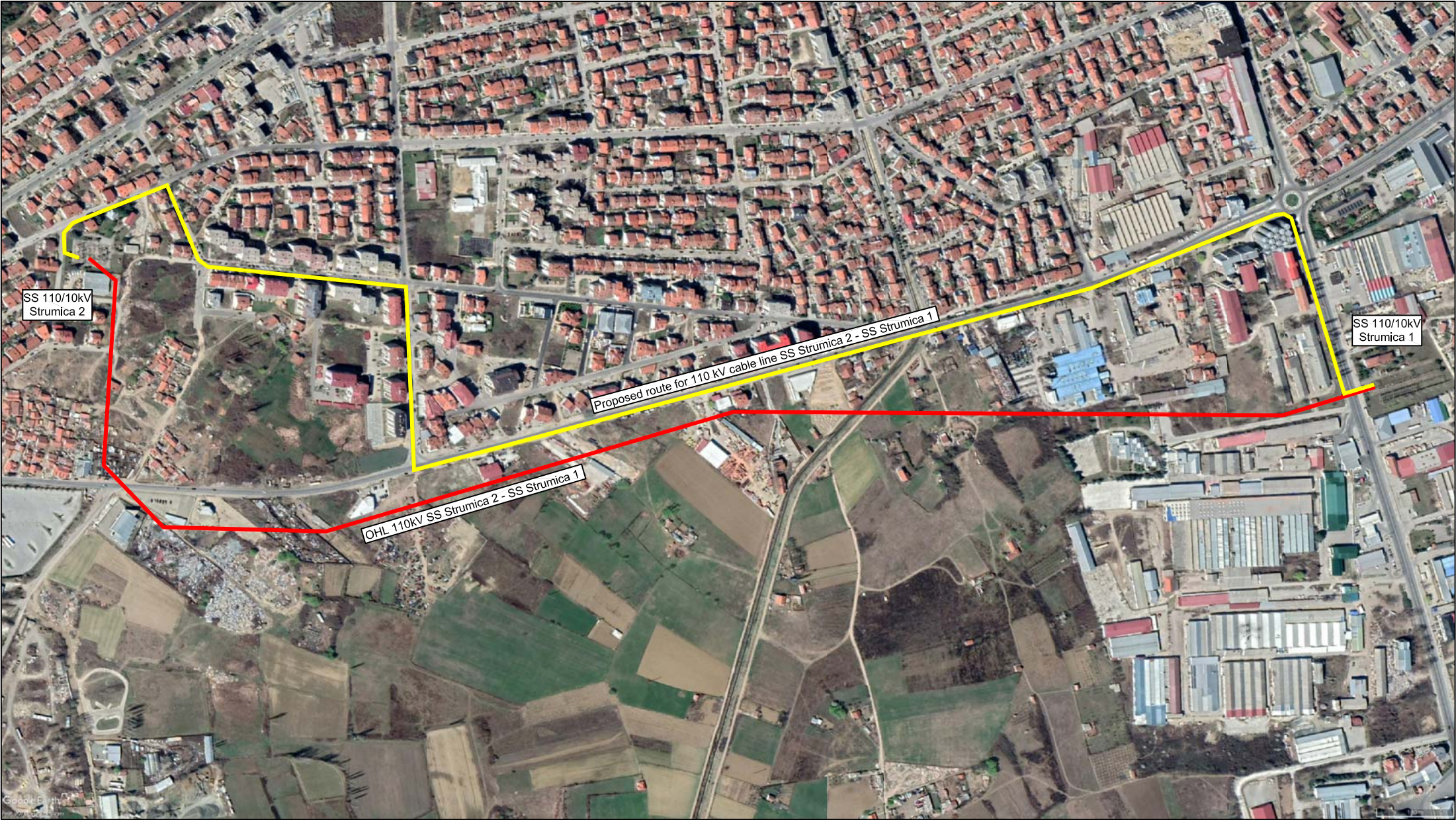
OHL 110kV SS Valandovo - SS Strumica 2

Proposed route for cabling of part of OHL 110 kV Valandovo - Strumica 2

V-S2 St47

Terminal Tower for switching from OHL to Cable line

V-S2 St46



SS 110/10kV
Strumica 2

SS 110/10kV
Strumica 1

Proposed route for 110 kV cable line SS Strumica 2 - SS Strumica 1

OHL 110kV SS Strumica 2 - SS Strumica 1